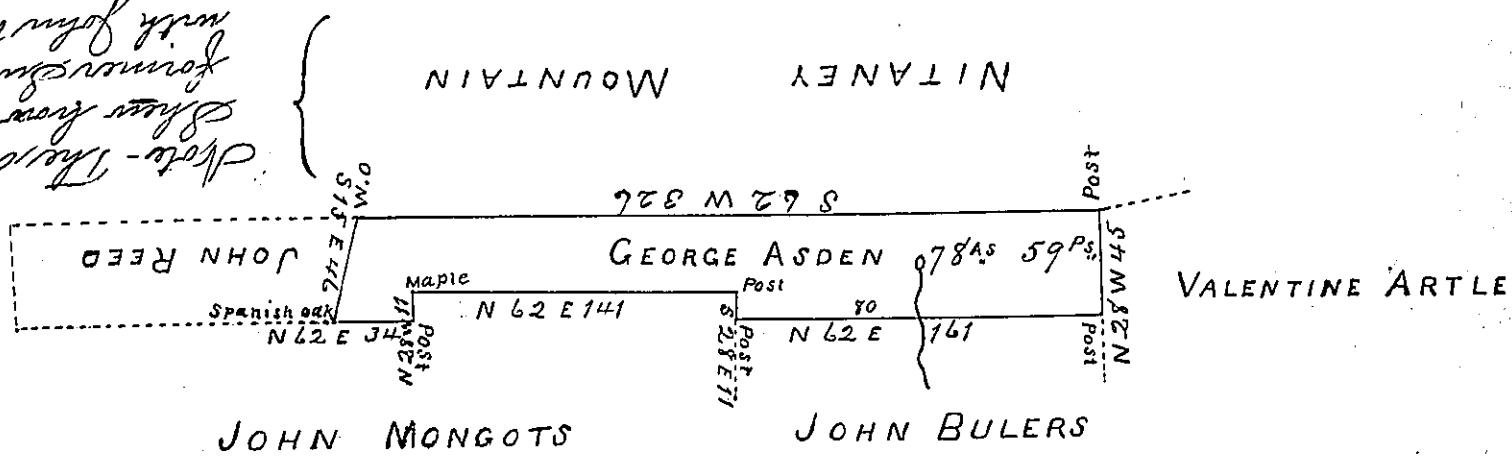


*State - The dotted lines
show how far the
former survey is in fact
with John Reed's survey*



The Draught of a tract of Land Situate
formerly in Haines Township Northumberland
County, now Miles Township Centre County
Containing Seventy eight Acres fifty nine perches
and Allowance, of Six percent for Roads &c. Sur-
veyed the 20th of November 1794, in pursuance of
a warrant to George Asden, dated the 4th day of
April 1792 Containing, one hundred, and eight
Acres 122 perches & allowance, of six per Cent &c.
And resurveyed the 21st day of June 1811 by virtue
of An Order, of the Board, of Property, dated the
14th day of May 1810 Clear of Interference -
To Andrew Porter Esquire per Wm Kerr D.S.
Surveyor General of Pennsylvania

IN TESTIMONY that the above is a copy of the original remaining on file in
the Department of Internal Affairs of Pennsylvania, made
conformably to an Act of Assembly approved the 16th day of
February, 1833, I have hereunto set my Hand and caused
the Seal of said Department to be affixed at Harrisburg,
this fourth day of August 1903

George P. Brown
Secretary of Internal Affairs.